

PADULE DI FUCECCHIO ROADBOOK

0,000	➔ Starting point in Piazza Italia, in front of the Railway Station of Montecatini Terme . Go along the street that enters the city centre
0,500	At the traffic light, turn left towards Pescia/Lucca . Cross the railway tracks
0,800	At the roundabout take the 2nd exit
1,200	At the roundabout take the 5th exit , towards Pistoia . Pass through the industrial area
1,650	At the roundabout take the first exit , towards Ponte Buggianese and go along the SP26 road. Pass over an overpass
2,100	At the roundabout take the 2nd exit
3,650	Petrol station at Km 3.65
3,800	At the roundabout take the 2nd exit
5,700	At the roundabout take the 3rd exit , towards Ponte Buggianese and continue along the SP15 road
6,800	Petrol station at Km 6.8
6,950	Turn right taking Via della Libertà
7,200	Once arrived in the centre of the hamlet of Ponte Buggianese , in the Piazza della Chiesa parking is possible. To exit turn right and continue straight ahead
7,300	Turn right and follow the street
7,500	Turn right again
7,700	Turn left and continue straight ahead until reaching the STOP sign
7,900	At the STOP sign turn right
8,000	Turn left towards Anchione
9,300	Turn left towards Ponte di Mingo
10,500	At the STOP sign continue straight ahead
10,650	Turn right
10,800	Turn left and continue straight ahead
11,500	Turn left and go over a small bridge, Via Colmate del Cerro
12,100	Continue straight ahead , passing over several small bridges that speckle this wetland

17,450	Laghi di Crocialoni (Lakes of Crocialoni) – to reach them the street is a dirt road, but in good condition. Park the Vespa and not far away on the right it is possible to see the expanse of water. Go back over the same road
18,400	At the end of the street turn right
19,600	At the STOP sign turn right . Continue straight ahead , towards Le Pinete
21,800	At the STOP sign turn left , towards Le Pinete . Continue straight ahead , towards Ponte a Cappiano
25,300	At the STOP sign turn left , towards Ponte a Cappiano
26,400	Turn left towards Ponte a Cappiano
28,000	Arrival in Ponte a Cappiano . Parking and a visit to the Ponte Mediceo (Medicean Bridge) is recommended. To continue the itinerary, turn left taking Via Ramoni, towards Massarella
30,650	At the STOP sign turn left , towards Torre and Massarella . At Km 31.50 deviation for Torre on the right
33,650	At the STOP sign turn right , towards Stabbia . Along the road, on the left, there is a panoramic view of Padule di Fucecchio
36,900	At the STOP sign turn left , towards Montecatini and take the SR436 road Petrol station at Km 38.1 and 41.0
43,450	At Km 43.45 in Castelmartini , there is a deviation on the left towards the Visit Centre of the Padule Nature Reserve , for itineraries by foot among nature and to observe the fauna that characterises this area
44,000	At the roundabout take the 1st exit , towards Cintolese
46,700	Petrol station at Km 46.7
49,100	Arrival in Monsummano Terme . Parking area in the square. To finish the Tour follow the directions for Montecatini . At the traffic light continue straight ahead
50,950	At the traffic light, after the bridge turn right , towards Pistoia
51,050	At the STOP sign turn left
52,300	Arrival in Piazza Italia, Montecatini Terme



VISIT THE WEBSITE



PROVINCIA
DI PISTOIA

INFO POINT
Abetone + 39 0573 60231
Cutigliano + 39 0573 68029
Pistoia + 39 0573 21622
info@pistoia.turismo.toscana.it

MAPS AND TEXT
Entroterra
Viaggi&Turismo
PHOTOS
APT - K. Fox - Italia
Turistica M. Melodia
TRANSLATION
Studio Blitz - Pistoia
GRAPHIC DESIGN
Studio Phaedra



Toscana
MONTAGNE SLOWTOSCA in vespa

PADULE DI FUCECCHIO

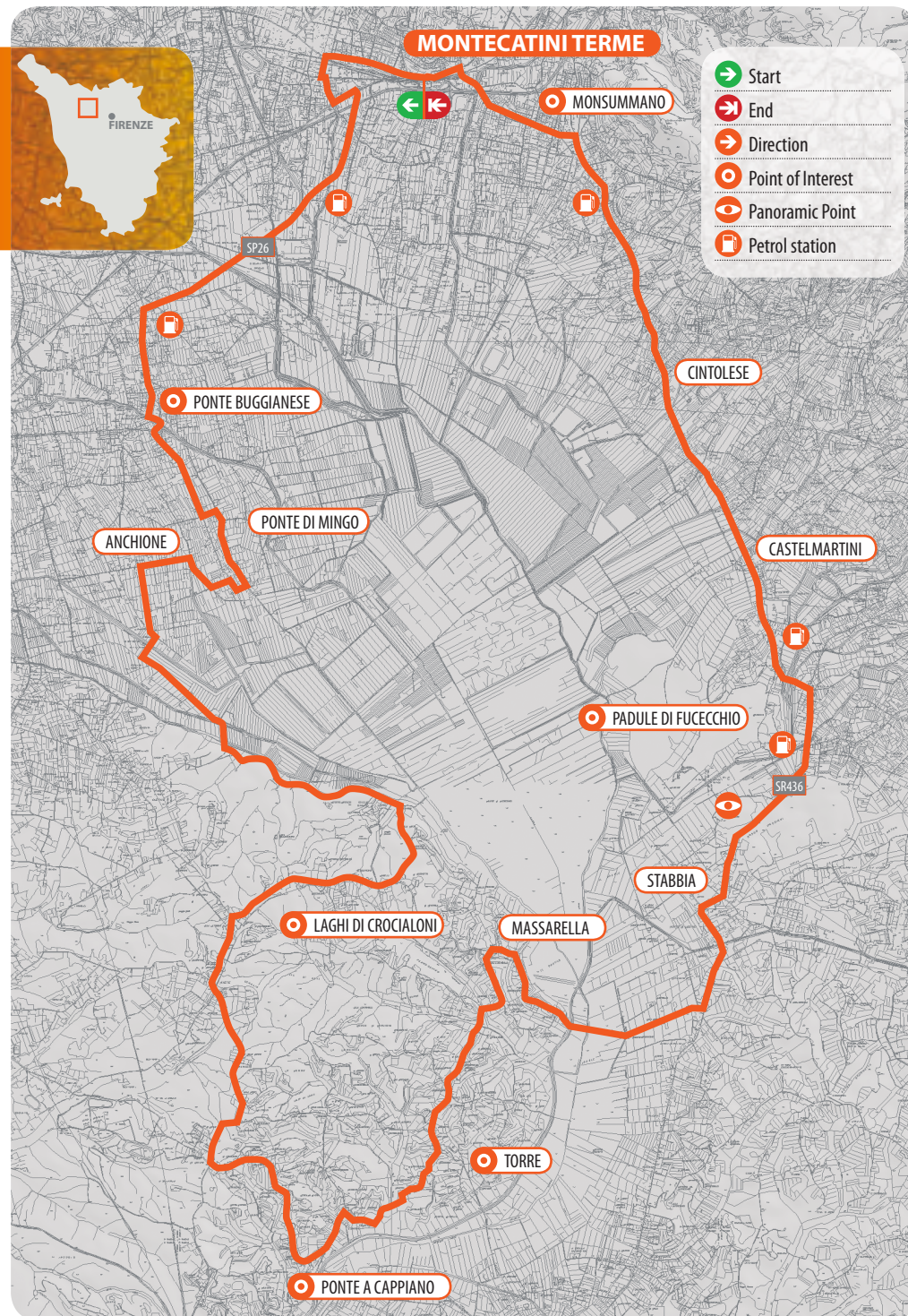
www.pistoia.turismo.toscana.it



**AGENZIA
PER IL TURISMO**
ABETONE PISTOIA
MONTAGNA P.S.E.



Intervento realizzato all'interno delle azioni previste dal progetto interregionale (L. 135/2001 art. 5) "Valorizzazione comprensorio sciistico toscano emiliano" cofinanziato da Presidenza del Consiglio dei Ministri - Dipartimento per lo sviluppo e la competitività del turismo - e dalla Regione Toscana



Toscana

PADULE DI FUCECCHIO

The itinerary starts from Montecatini Terme and is directed towards the largest Tuscan natural wetland area: Padule di Fucecchio. It partially runs through marsh roads, crosses small bridges and plunges into the typical Padule vegetation. Different stages are recommended, among which Ponte a Cappiano, which is erected on the Usciana canal, Ponte Buggianese, once covered by the marshes and successively reclaimed, Torre, Massarella, and Monsummano Terme. For nature lovers we recommend a visit to the Riserva Naturale del Padule di Fucecchio (Padule di Fucecchio Nature Reserve), starting by foot, from the Centro Visite di Castelmartini (Visit Centre of Castelmartini). The Nature Reserve, of great environmental value, hosts many waterfowl that can be watched from the numerous positions along the itinerary and therefore, you can learn to recognise them.

TOTAL LENGTH OF THE ITINERARY: **52.30 km**

LEVEL OF DIFFICULTY: **easy**

TYPE OF STREET SURFACE: **The majority is asphalted, in good conditions. There is a short dirt road section to reach the Laghi Crocialoni**

TRAVELLING TIME: **Only the itinerary, about 1 hour and 30 minutes, excluding stops**

MINIMUM ALTITUDE RANGE: **15 m above sea level**

MAXIMUM ALTITUDE RANGE: **83 m above sea level**

PONTE BUGGIANESE

Ponte Buggianese is a small hamlet that is located on the north-western side of the Padule di Fucecchio. During the Middle Ages the territory was covered by marshes where the current hamlet of Ponte Buggianese stands: the area was populated only after the reclamation of the waters coming from the Palude di Fucecchio. Among the most important

monuments we must mention the Chiesa di San Michele Arcangelo (Church of Saint Michael Archangel), Santuario di Santa Maria del Buon Consiglio (Sanctuary of Santa Maria del Buon Consiglio) and the ruins of the medieval hamlet.

PONTE A CAPPIANO

Ponte a Cappiano is a picturesque town that stands on the Usciana canal, the

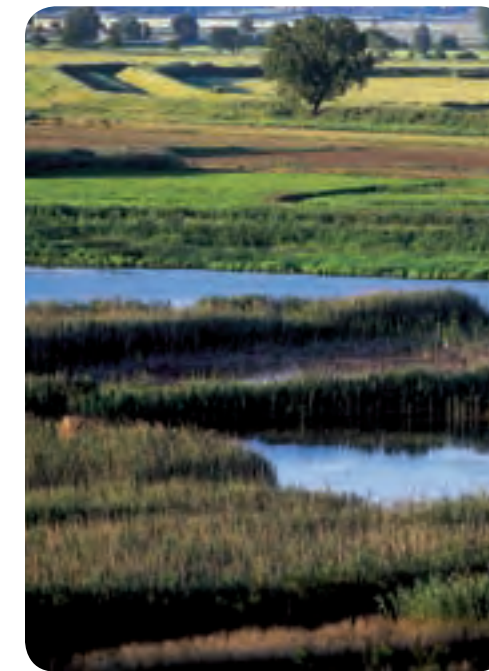
only outflowing stream of the Padule. We recommend a visit to the Ponte (Bridge), of medieval origin that in that period was managed by the Ospitalieri di Altopascio and on it passed the ancient Via Francigena.

TORRE AND MASSARELLA

Torre and Massarella are small towns that can be encountered along the itinerary where it is possible to stop. From Massarella it is possible to see Padule di Fucecchio from above.

MONSUMMANO TERME

Monsummano Terme is famous for the Thermal baths and the Grotte Naturali (Natural Grottoes) (Grotta Giusti). Part of the town is also located on a hill, where the castle of Monsummano Alto is.



TOURISTS INFORMATION OFFICE OF MONTECATINI

Viale Verdi 66/68
Montecatini Terme
Tel +39 0572 772244
Opening hours:
from 9:00 a.m. – 01:00 p.m. / 3:00 p.m. – 6:00 p.m., everyday, all year round
(closed on 25.12. and 01.01.)

TOURISTS INFORMATION OFFICE OF MONSUMMANO

Municipal Building
Piazza IV Novembre 75
Monsummano Terme
Tel. +39 0572 959236
Opening hours:
from Monday to Friday 10.00 a.m. - 1.00 p.m.;
Tuesday and Thursday also from 2.30 p.m. – 5.00 p.m.

VISIT CENTRE OF THE PADULE NATURE RESERVE

Castelmartini
Tel. +39 0573/84540

ALONG THE ITINERARY

Returning towards Montecatini, in Monsummano (via Francesca Sud, 1268) unmissable is a stop at the Slitti "chocolate shop", one of the strong points of the area known as the Tuscan Chocolate Valley, an "area" of handcrafted and quality chocolate production, located between the territories of Pistoia, Prato, and Pisa.

